

# Discussion Prompts

Fill out the survey and I'll share some during Q&A

---

1. What's a tip or Best Practice you don't hear discussed enough?
2. What's one “lesson learned the hard way” that others could benefit from hearing?
3. If you had one extra hour a week — or a small grant — what's the first thing you'd improve?
4. What's a small act that kickstarted or rekindled AM in your community?
5. What partnerships or collaborations have made your work easier or more effective?
6. What's your favourite *low-cost or no-cost* asset management hack?



<https://www.surveymonkey.com/r/MoreWithLess2025>

# More with Less

Successful Asset Management with Limited Resources

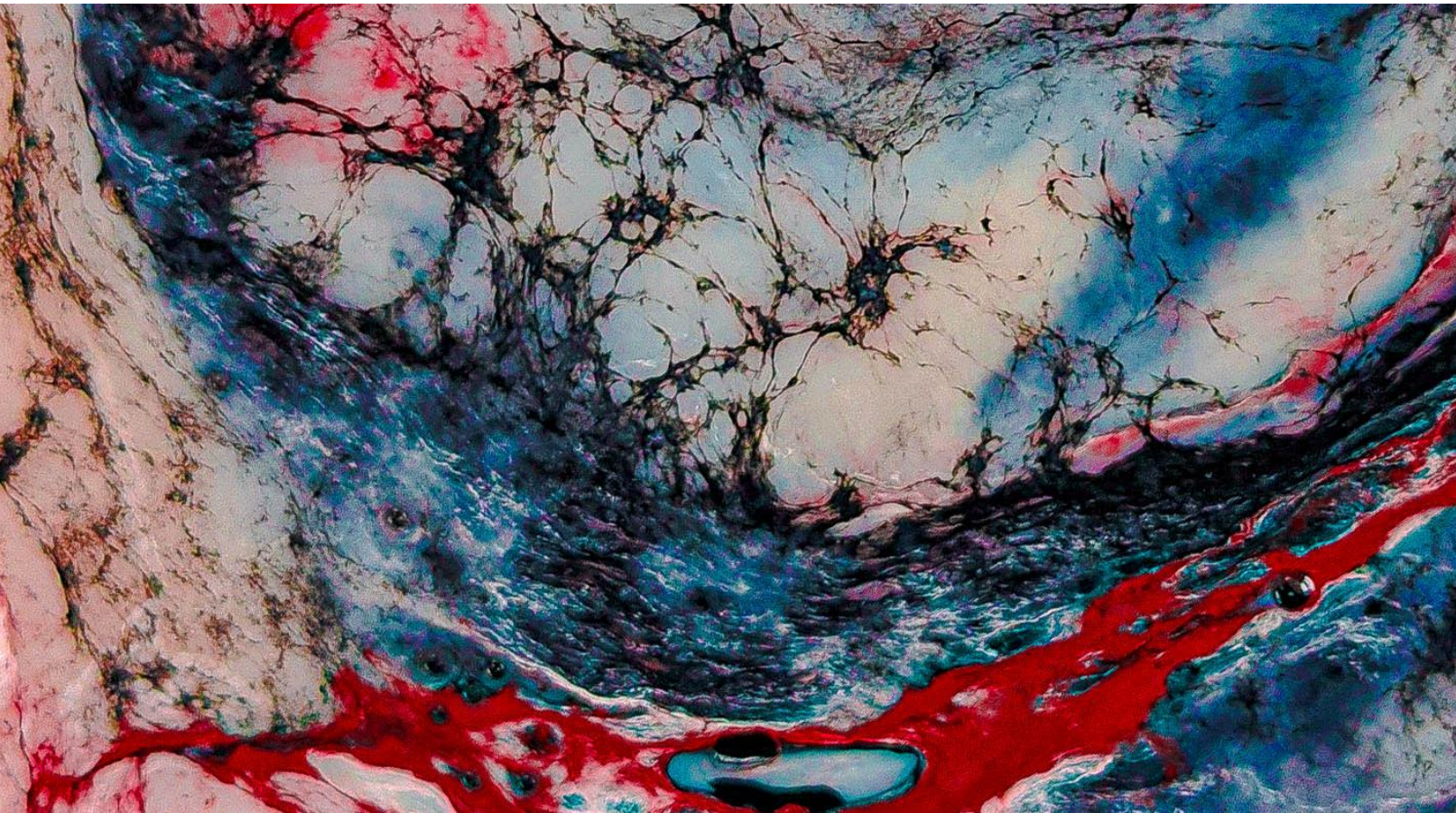
Cody Chance  
Facilities and Infrastructure Coordinator  
Sqwá First Nation

The words are mine  
The painting is mine  
The photos are mine or free  
Microsoft stock images



Old career

---



I used to  
take photos  
of  
PAINT

# New career

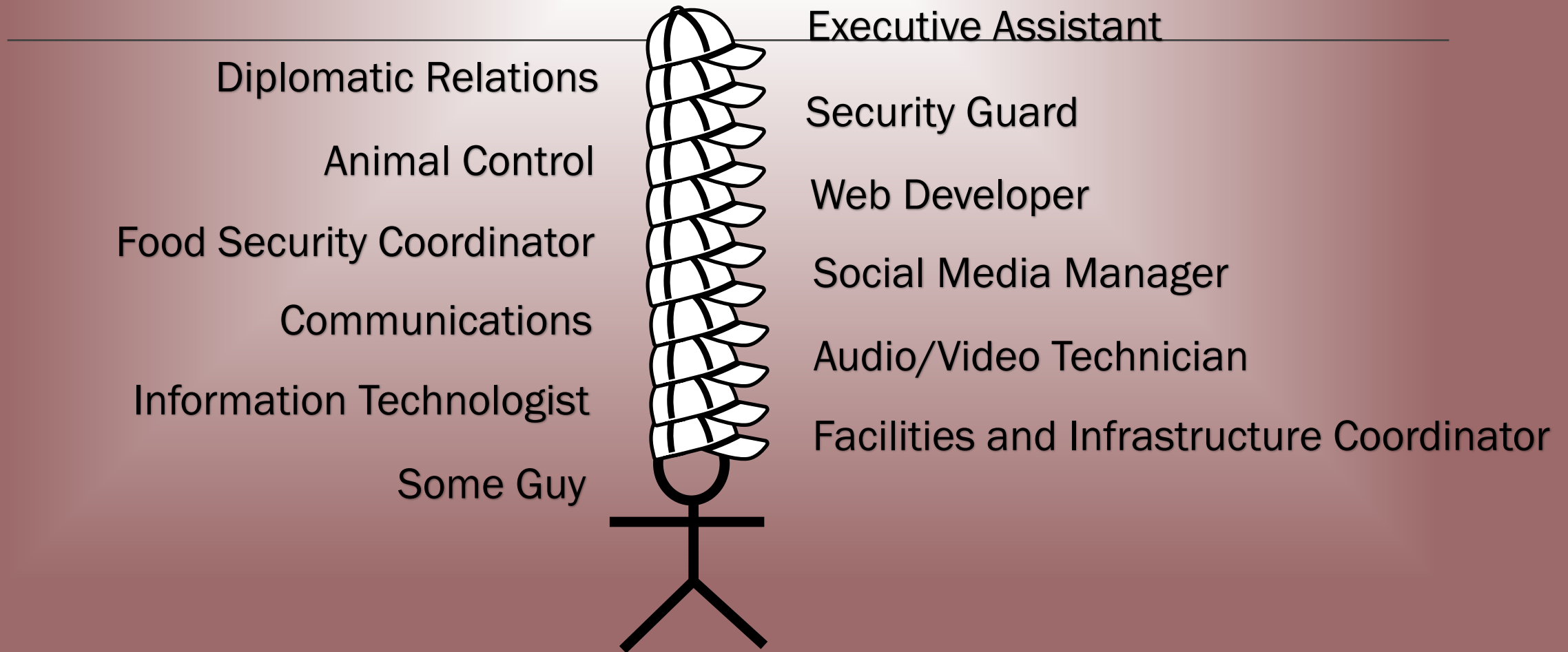
---

Now I  
take photos  
of

INFRASTRUCTURE



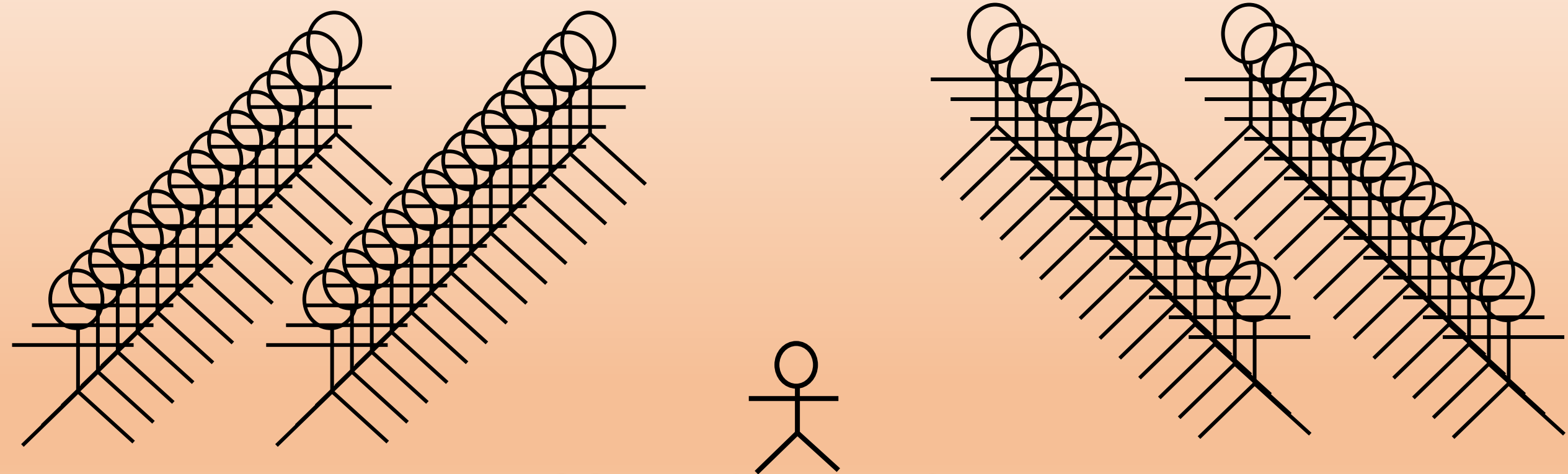
# The Many Hats We Wear



# Gratitude

On the Shoulders of Giants

---



Me trying my best



# The Risk of Not

---

# Resource Reality

---

**NO**

**Money!**

**Time!**

**Experience!**



# Slow Progress Is Still Progress!!!



Devin Townsend



# Best Practices

---

## Start Simple

Use what you have!

# Asset Management for Informed Service Delivery

---

PREPARED BY CODY CHANCE

FACILITIES AND INFRASTRUCTURE  
COORDINATOR

SQWÁ FIRST NATION

2025-05-08





# What is Asset Management?

---

**Asset Management** is the process of integrating **people's skills and actions** with **information about the community's physical infrastructure assets and financial resources** to ensure long term **sustainable service delivery**.

# Asset Management Primer Video

---

Don't  
Worry -  
It's Only  
1:26



# What is Informed Service Delivery?

---

It's how we provide services such as clean water, waste removal, health, education, the natural environment, culture, housing, transportation, and recreation to our community in a way that fosters its social, environmental, cultural, and economic well-being, by drawing on what we know about the past, present, and future to inform better decisions. These are the services our members expect and depend on – and future generations will rely on. Delivering those services sustainably means:

Ensuring that current community service needs are met or exceeded

Supporting service delivery that is socially, environmentally and economically responsible

Helping future generations meet their needs

Considering community priorities

Reflecting the balance of trade-offs between available resources and desired services

# Lifecycle Costing & Financial Planning

## Lifecycle Costs for a Hypothetical New Recreation Centre

	Estimated cost	Proportion of total lifecycle costs
Construction costs	\$10M	10%
Operating costs (\$1M per year x 70 years)	\$70M	70%
Component capital renewal costs (roofing, HVAC)	\$20M	20%
<b>Total lifecycle costs</b>	<b>\$100M</b>	

**= ~\$1.4M / year**

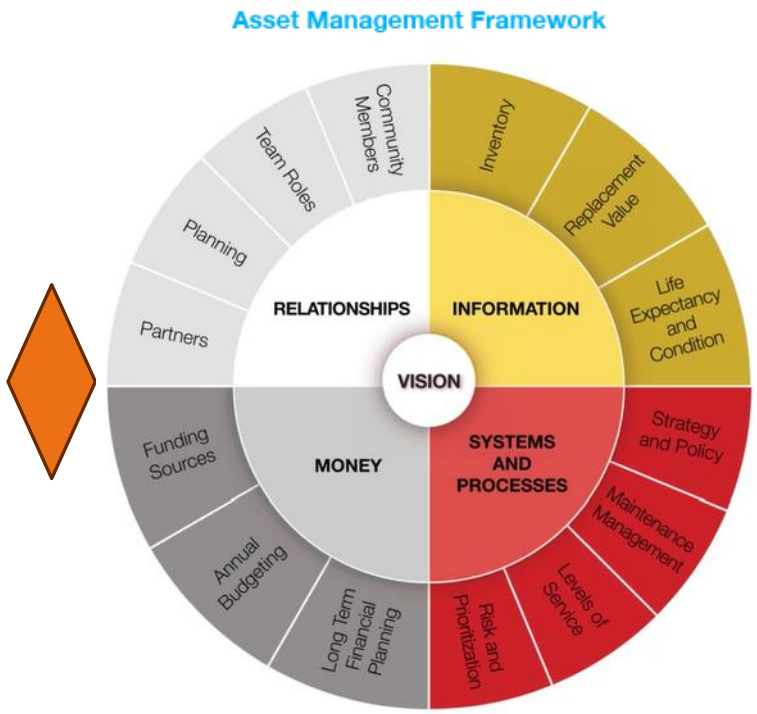
**To operate, maintain, and replace over its life.**

### Takeaway:

Sqwá FN, like most communities, has not had the resources to build up capital reserves year over year, to maintain and replace aging assets,, and has had to rely on insufficient ISC funding to try to maintain asset conditions and service levels that meet Members' needs.

# Where are we? Where do we go? How do we get there?

Asset Inventory
Replacement Cost
Condition Assessment
Risk, Criticality, Prioritization
GIS (Geographic Information System)
Asset Management Strategy
Asset Management Policy
Maintenance Management Plan
Levels of Service
Capital Projects Workplan
Long-Term Financial Planning
Succession Planning
Ongoing Assessment & Updates



**Include  
Gather  
Develop  
Understand**

---

Questions?

Comments?

Concerns?

Jokes?



# Best Practices

---



Don't have the end of a presentation  
in the middle of your presentation

A photograph of the Eiffel Tower in Paris, France, viewed from a low angle. The tower is the central focus, with its intricate lattice structure clearly visible. In the foreground, a stone bridge with several arches spans across the frame. The background shows a clear blue sky and some distant buildings. The overall scene is bright and clear.

# Best Practices

---

## Focus on Service and Risk

What matters most to the community?



Best Practices

---

Learn from Others

# Best Practices

---

**Partner Up AND Build Capacity**

**You can't always do it yourself**

# Small Steps, Huge Change

---



# Step 1

---

Start  
Where  
You  
Are



# Step 2

---

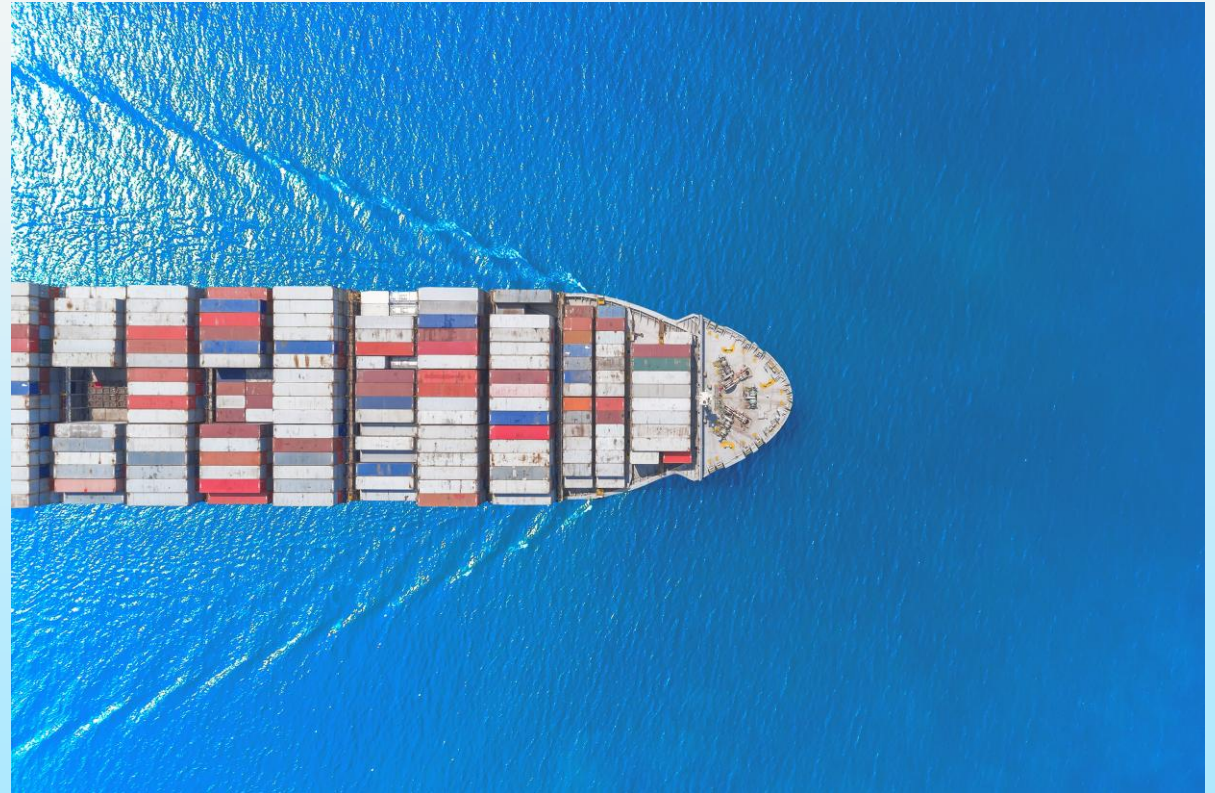
**Focus on  
What  
Matters  
Most**



# Step 3

---

**Build  
Relationships**



# Step 4

---

## Keep Learning

From every source you can  
find



# Step 5

---

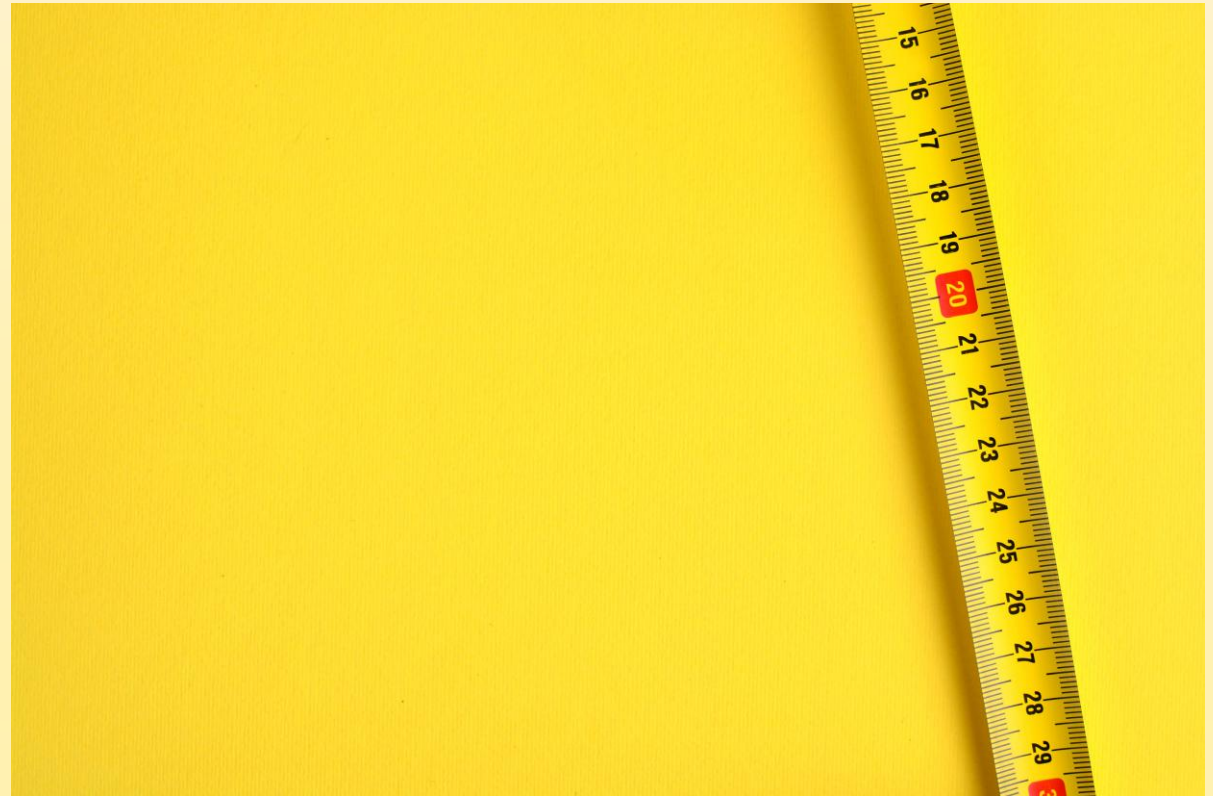
**Make It Useful  
and Useable**



# Step 6

---

Measure  
Progress by  
Understanding,  
not just  
Documents





All Together

---

Adaptable

Confident

Thoughtful

Real People

Informed

# Discussion Prompts

Fill out the survey and I'll share some during Q&A

---

1. What's a tip or Best Practice you don't hear discussed enough?
2. What's one “lesson learned the hard way” that others could benefit from hearing?
3. If you had one extra hour a week — or a small grant — what's the first thing you'd improve?
4. What's a small act that kickstarted or rekindled AM in your community?
5. What partnerships or collaborations have made your work easier or more effective?
6. What's your favourite *low-cost or no-cost* asset management hack?



<https://www.surveymonkey.com/r/MoreWithLess2025>